

FEATURES

- Dual flushing ports
- Flanged & in-line seal designs
- Optional exotic materials
- Up to 600# rating

APPLICATION

- Flushing crystalized media
- Cleaning of diaphragms

Detachable / Integrated Designs

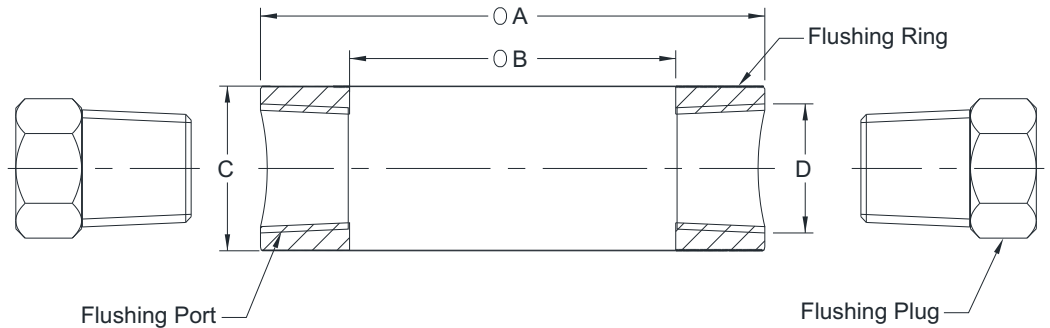


STANDARD SPECIFICATIONS

Flange Size	:	1/2" up to 4" as per ANSI B16.5
	:	DN25 up to DN100 as per EN 1092-1
Material	:	AISI 316 SS
Flange facing	:	Raised face
Flushing port	:	1/2"NPT (F), plugged
Maximum working pressure	:	As per flange rating
Facing finish	:	125 - 250 AARH for Raised Face and 63 AARH for Ring type joint

DIMENSIONAL DRAWING

Pattern 1



ANSI B16.5

Flange Size	Class	A	B	C	D
1/2"	150 # to 600 #	35	20	25 (1/4" NPT) or 35 (1/2" NPT)	1/4" NPT or 1/2" NPT
3/4"	150 # to 600 #	43	26		
1"	150 # to 600 #	51	32.5		
1 1/2"	150 # to 600 #	73	47.5		
2"	150 # to 600 #	92	59.5		
2 1/2"	150 # to 600 #	105	72.5		
3"	150 # to 600 #	127	88		

All dimensions are in mm

DIMENSIONAL DRAWING

EN 1092-1

Flange Size	Pressure Rating	ØA	ØB	C	D
DN 10	10 to 100	40	17	25mm for 1/4"NPT(F) and 30mm for 1/2"NPT(F)	1/4"NPT(F) OR 1/2"NPT(F)
DN 15	10 to 100	45	20		
DN 20	10 to 40	58	26		
DN 25	10 to 100	68	32.5		
DN 32	10 to 40	78	42		
DN 40	10 to 100	88	47.5		
DN 50	10 to 100	102	59.5		
DN 65	10 to 100	122	72.5		
DN 80	10 to 100	138	88		
DN 100	10 to 16	158	114		
	25 to 100	162	114		

All dimensions are in mm

ORDERING CODES

1. FLANGE SIZE / SEAL TYPE

50	1/2"
75	3/4"
01	1"
15	1 1/2"
02	2"
25	2 1/2"
03	3"
04	4"
05	5"
S01	For D101 (-1...70 bar)
S02	For D101 (100...400 bar)
S06	For D102 (-1...70 bar)
S07	For D102 (-1...70 bar)
S21	For D201 (-1...70 bar)
S22	For D201 (100...400 bar)
S23	For D201 (-1...70 bar)

15

2. MATERIAL

MB	ASTM A105 / Carbon Steel
MF	AISI 316 SS
MG	AISI 316L SS
MM	Monel
MO	Hastelloy C-276

MF

3. FLANGE FACING

R	Raised Face
J	Ring-Type Joint
F	Flat Face

R

4. FLUSING PORT SIZE

02N	1/4" NPT (F)
04N	1/2" NPT (F)

04N

5. OTHER OPTIONS

TC	Material test certificate 3.1
TM	Material test certificate 2.2
TN	Tested to NACE standards
XM	Marking by engraving
XL	Marking by laser

XM

Ordering Example : A301-15-MF-R-04N-XM

NOTES:

- In case the flushing ring is required for D101, D102 or D201, please don't select the Flange Facing option.
- D101, D102 & D201 are integrated with diaphragm seals.