

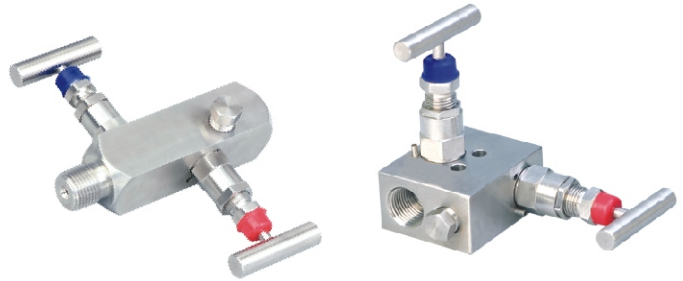
FEATURES

- 1 isolate & 1 vent valves

APPLICATION

- Isolation & venting of gauges, switches & transmitters
- High pressure line shut off
- Liquid & gas services

Direct / Remote Mounting



STANDARD SPECIFICATIONS

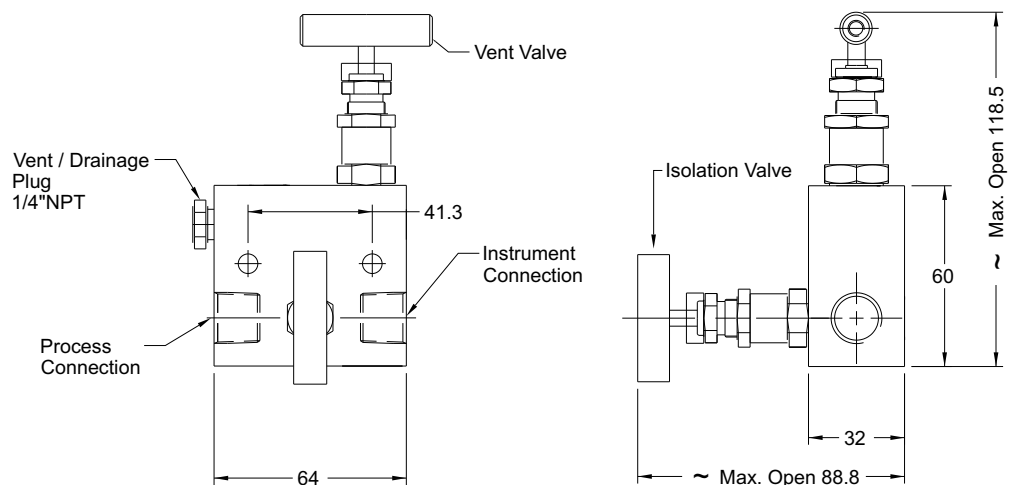
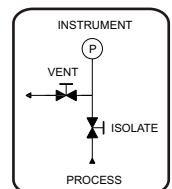
Mounting	: Remote
Pattern	: 2
Wetted parts	: AISI 316 SS
Instrument connection	: 1/2" NPT (F) / 1/2" BSP (F)
Stem packing	: PTFE
Process connection	: 1/2" NPT (M) / 1/2" BSP (M)
Stem	: Conical metal tip
Max. working pressure	: 413.7 bar (6000 psi) —> Option (OV) up to 15000 psi
Max. working temperature	: 240°C
"T" bar handle	: AISI 304 SS
Drain port	: 1/4" NPT (F), plugged

DIMENSIONAL DRAWING

Remote mount - Pattern 1



FLOW DIAGRAM



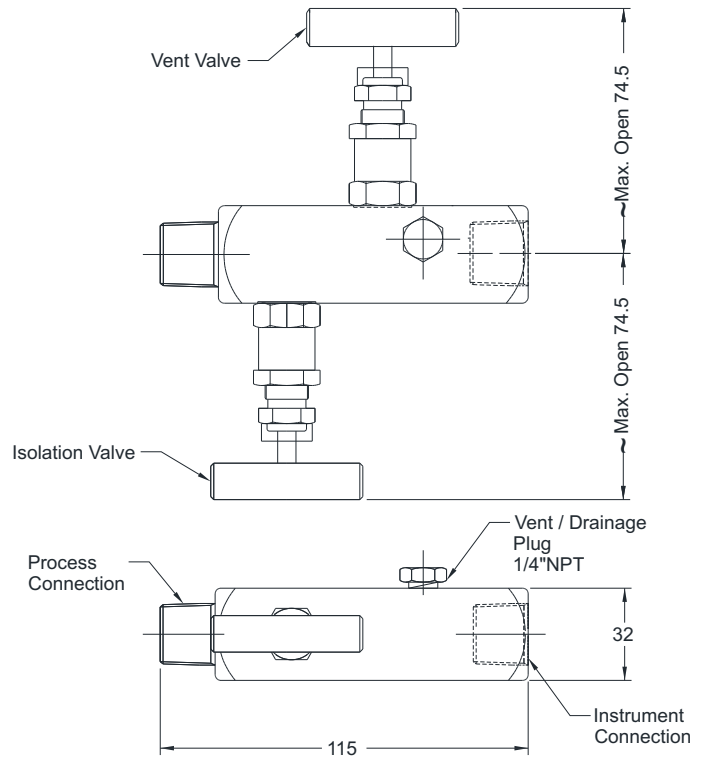
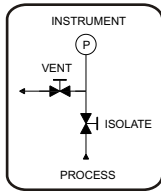
All dimensions are in mm.

DIMENSIONAL DRAWING

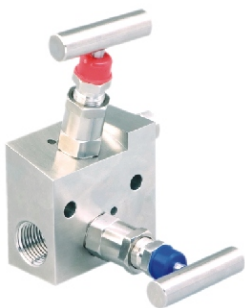
Remote mount - Pattern 2



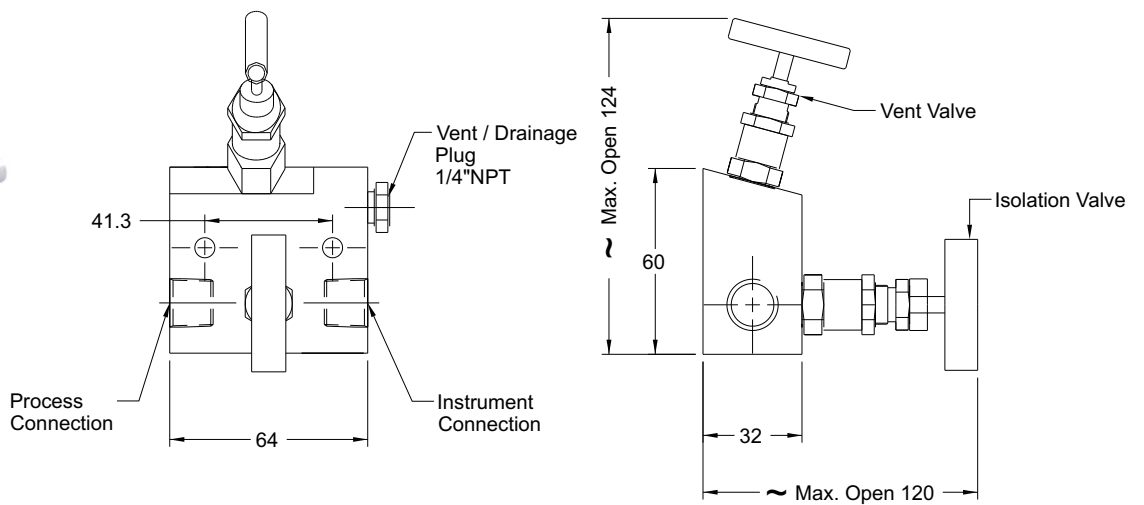
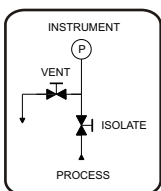
FLOW DIAGRAM



Remote mount - Pattern 3



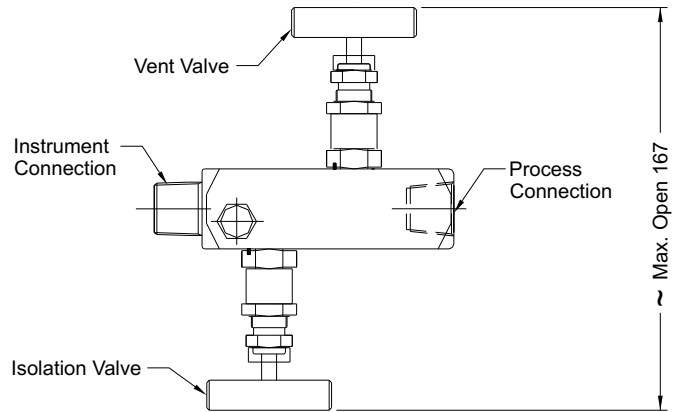
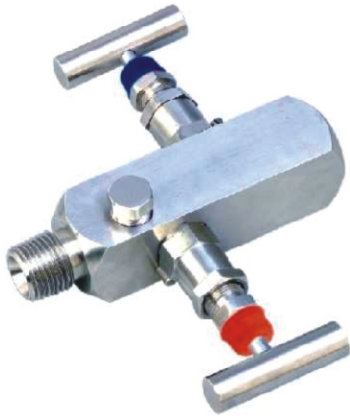
FLOW DIAGRAM



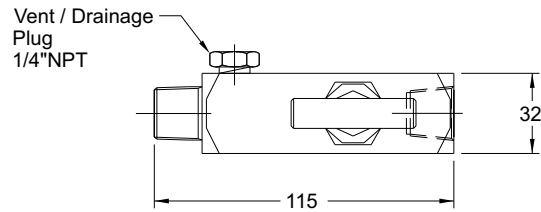
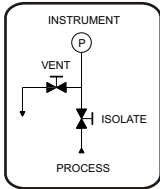
All dimensions are in mm.

DIMENSIONAL DRAWING

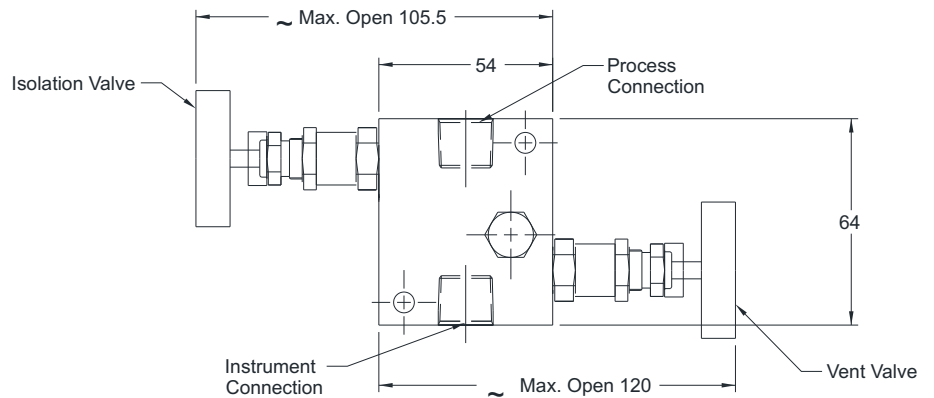
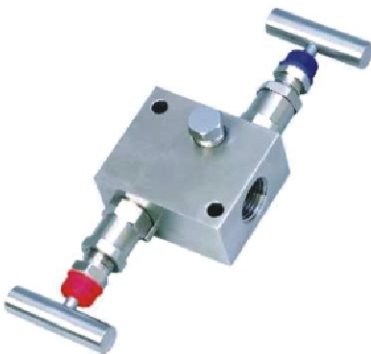
Remote mount - Pattern 4



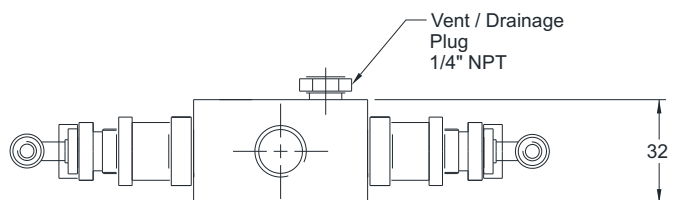
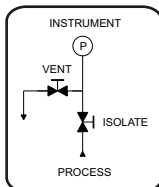
FLOW DIAGRAM



Remote mount - Pattern 5

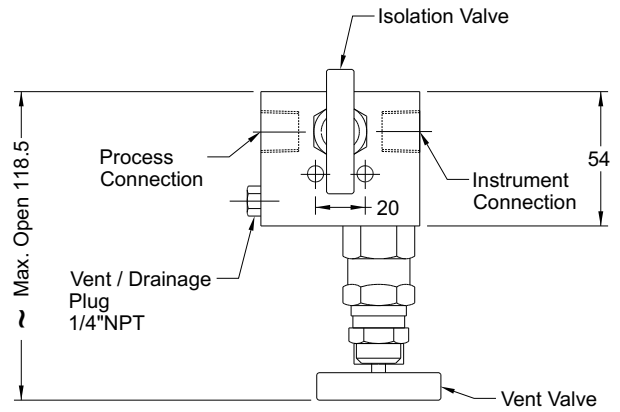
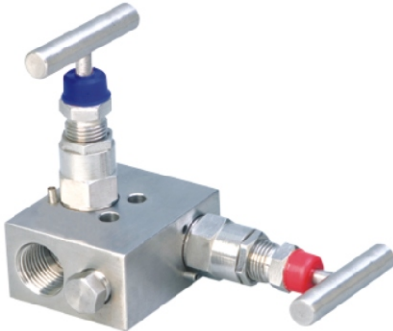


FLOW DIAGRAM

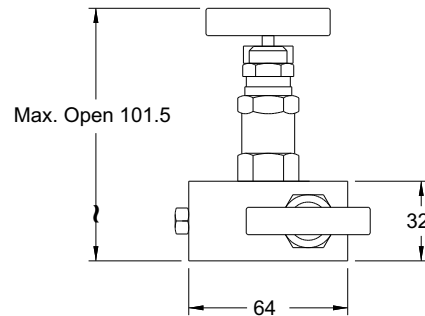
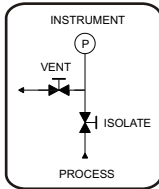


DIMENSIONAL DRAWING

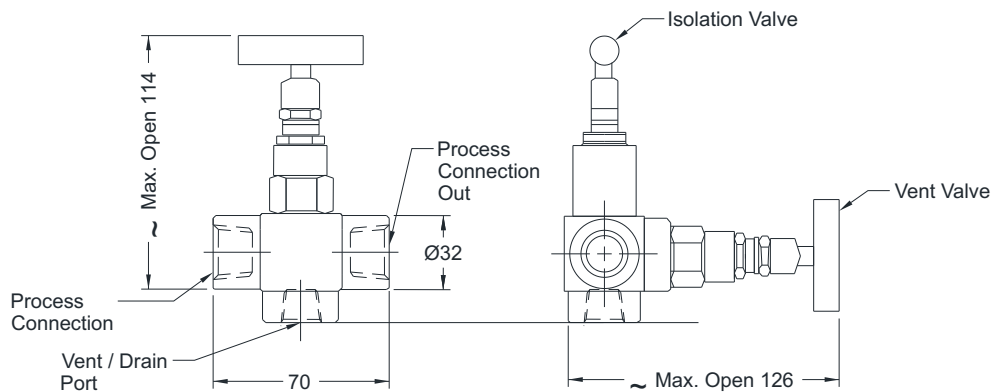
Remote mount - Pattern 6



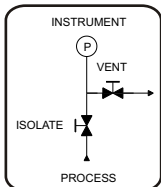
FLOW DIAGRAM



Remote mount - Pattern 7



FLOW DIAGRAM



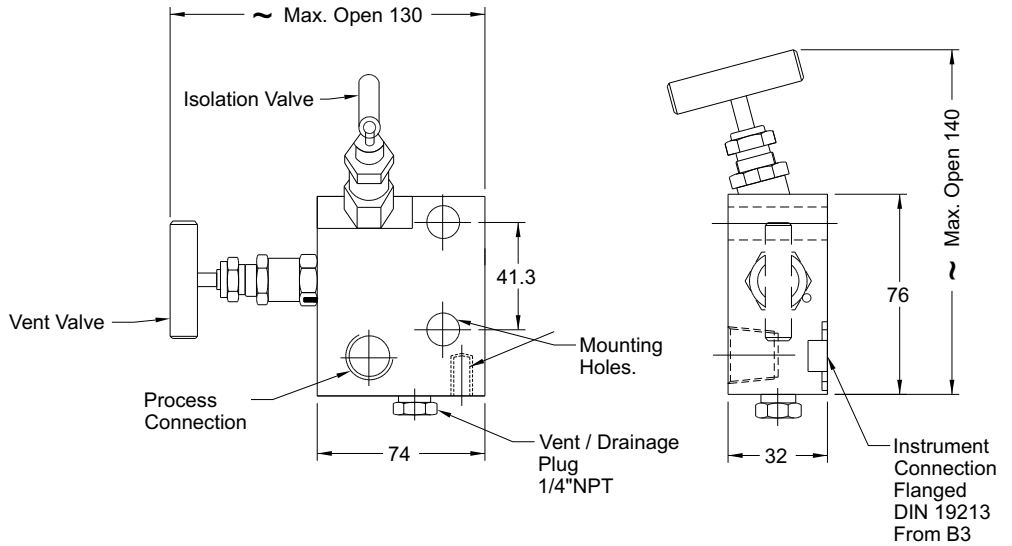
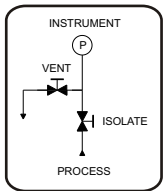
All dimensions are in mm.

DIMENSIONAL DRAWING

Direct mount - Pattern 1



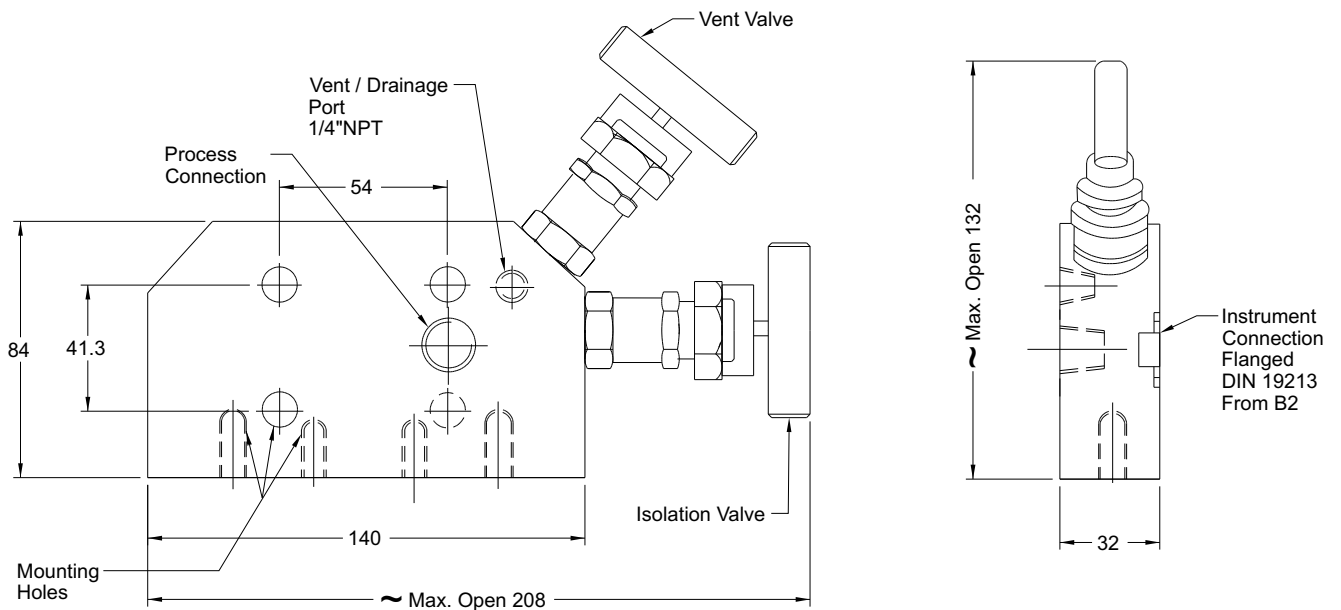
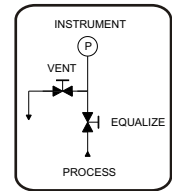
FLOW DIAGRAM



Direct mount - Pattern 2



FLOW DIAGRAM

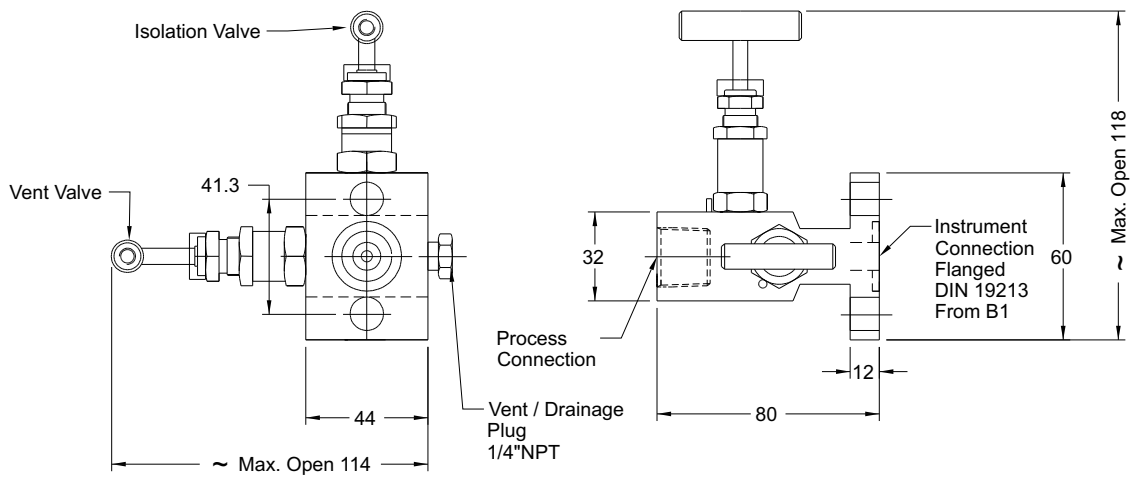
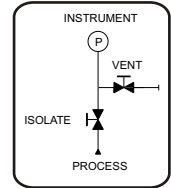


DIMENSIONAL DRAWING

Direct mount - Pattern 3



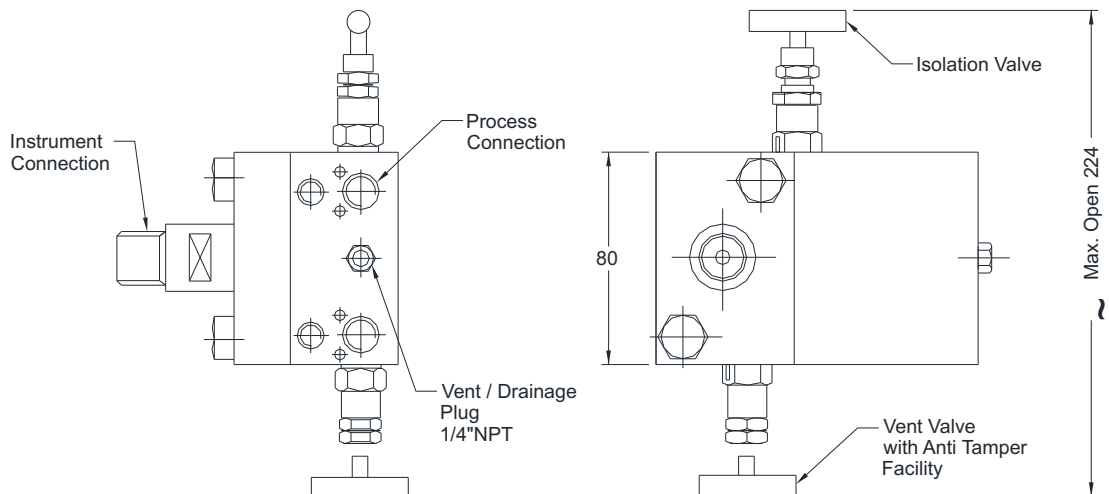
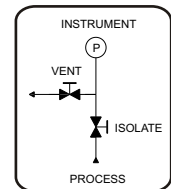
FLOW DIAGRAM



Direct mount - Pattern 4



FLOW DIAGRAM



All dimensions are in mm.

ORDERING CODES

1. MOUNTING

D Direct **R** Remote

2. TYPE

1 Pattern 1 **2** Pattern 2
3 Pattern 3 **4** Pattern 4
5 Pattern 5 **6** Pattern 6
7 Pattern 7

3. WETTED PARTS

MB Carbon Steel / ASTM A105
MC AISI 304SS **MF** AISI 316 SS
MG AISI 316L SS **MM** Monel 400
MN Monel K-500 **MO** Hastelloy C-276
MI Inconel 625 **MD** Duplex F51

4. INSTRUMENT CONNECTION

11N 1/8" NPT (M) **12N** 1/4" NPT (M)
13N 3/8" NPT (M) **14N** 1/2" NPT (M)
11B 1/8" BSP (M) **12B** 1/4" BSP (M)
13B 3/8" BSP (M) **14B** 1/2" BSP (M)
01N 1/8" NPT (F) **02N** 1/4" NPT (F)
03N 3/8" NPT (F) **04N** 1/2" NPT (F)
01B 1/8" BSP (F) **02B** 1/4" BSP (F)
03B 3/8" BSP (F) **04B** 1/2" BSP (F)
FL5 Flange (DIN 19213 Form B1)
CL5 Coplanar (DIN 19213 Form B2)
FL6 Flange (DIN 19213 Form B3)

5. STEM PACKING

P PTFE **G** Grafoil

6. PROCESS CONNECTION

11N 1/8" NPT (M) **12N** 1/4" NPT (M)
13N 3/8" NPT (M) **14N** 1/2" NPT (M)
11B 1/8" BSP (M) **12B** 1/4" BSP (M)
13B 3/8" BSP (M) **14B** 1/2" BSP (M)
01N 1/8" NPT (F) **02N** 1/4" NPT (F)
03N 3/8" NPT (F) **04N** 1/2" NPT (F)
01B 1/8" BSP (F) **02B** 1/4" BSP (F)
03B 3/8" BSP (F) **04B** 1/2" BSP (F)
1SW 1/8" Socket-Weld
2SW 1/4" Socket-Weld
4SW 1/2" Socket-Weld
5SW 3/4" Socket-Weld

7. OTHER OPTIONS

XY Circular Handle
TN Tested to NACE standards
TO Certification for Oxygen service
TM Material test certificate 2.2
TH Hydro test certificate
TC Material test certificate 3.1
XR Customized Marking
XL Marking by laser
OV Overpressure up to 15000 psi

Ordering Example : M102-R-2-MF-04N-P-14N-XL

APPLICABLE ACCESSORIES

A501 Mounting Bracket, two valve manifold A506 Mounting bolts
A507 Ring for flanged seal A508 Sealing gasket

NOTES:

1. Other connections are available, please contact factory for details.
2. Valve stem dust covers shall be identified with color codes according to their function as Blue = ISOLATE, Green = EQUALIZE & Red = DRAIN / VENT.
3. For option "F5 = Flange (DIN 19213 Form B1)", the CC distance shall be 54 mm.