

FEATURES

- Single piece forged drilled
- Or single piece bar-stock drilled
- Standard or customized shank dimensions
- Testing and certifications including Wake Frequency Calculations per ASME PTC 19.3 TW-2016

APPLICATION

- Petrochemical industry, oil and gas, water and wastewater temperature control
- For high process loads in typical Shell design

REFERENCE

Thermowell for lap flanges per ASME B16.5
 Vanstone design, per petrochemical standards
 Forged / Bar-stock

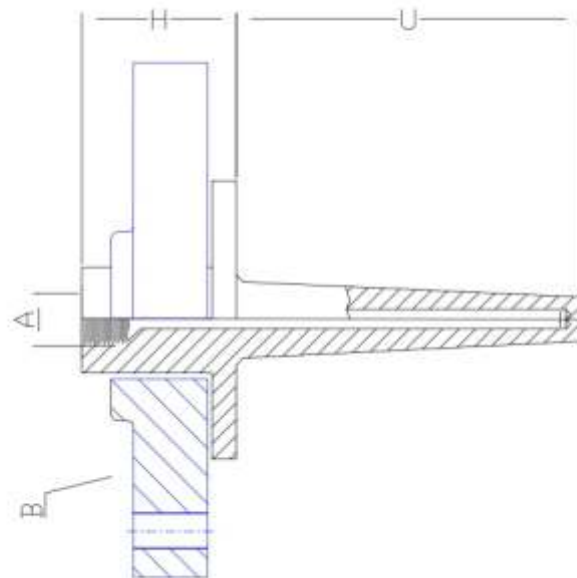


STANDARD SPECIFICATIONS

Shank form	:	tapered, straight or stepped
Material	:	AISI 316 SS
Instrument connection	:	1/2" NPT (F) / 1/2" BSP (F)
Bore diameter	:	6.6 mm
Lag extension	:	40 to 225 mm
Process connection	:	Flange ASME B16.5
Flange facing type	:	to ASME B16.5
Head type	:	Round

TYPICAL DRAWING

Van Stone thermowell components



A. INSTRUMENT CONNECTION

H. HEAD LENGTH

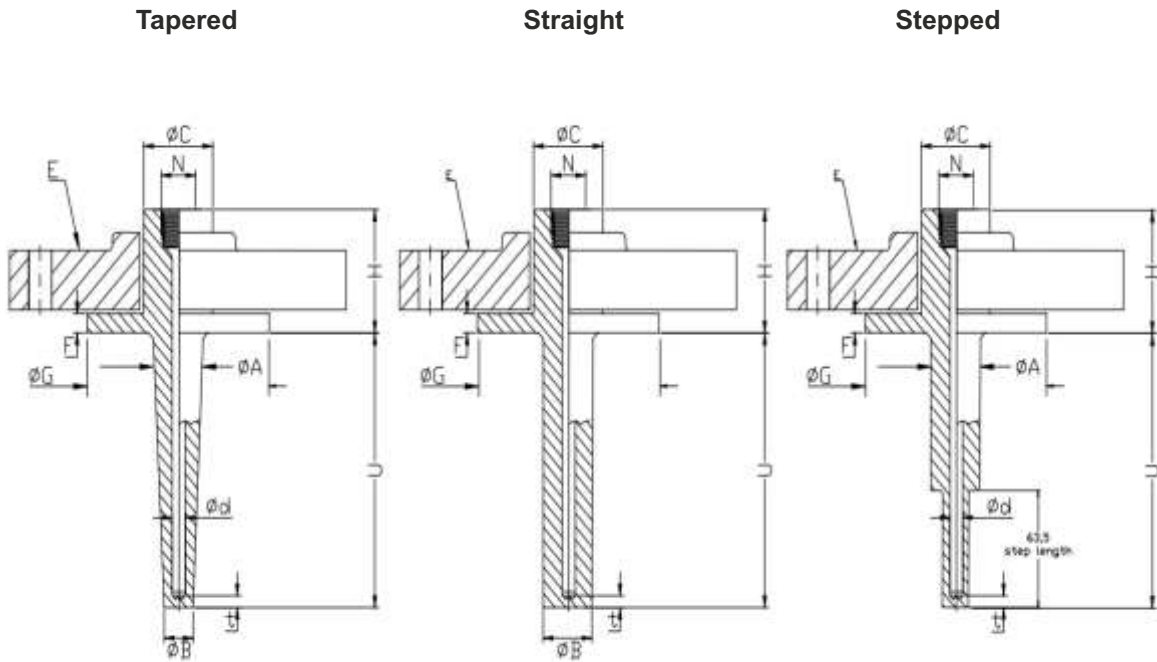
B. PROCESS CONNECTION

U. IMMERSION LENGTH

Note: Only thermowell available (flange by user)

DIMENSIONAL DRAWING

Van Stone / Lap Flanged mounted thermowell



Dimensions table mm

FLANGE ASME B16.5	C	Ø G RF face	Ø G RTJ face	F standard RF	F standard RTJ	Ø A stepped stem	Ø A tapered stem	Ø B tapered stem	Ø B straight stem
1-in. Class 150	33,4	50,8	63,5	10	16,35	19	22,5	16	19
1 1/2-in. Class 150	48,3	73	82,5		16,35	21,5	26,5	18	21,5
2-in. Class 150	60,3	92,1	102		16,35	21,5	26,5	18	21,5
1-in. Class 300	33,4	50,8	70		16,35	19	22,5	16	19
1 1/2-in. Class 300	48,3	73	90,5		16,35	21,5	26,5	18	21,5
2-in. Class 300	60,3	92,1	108		16,35	21,5	26,5	18	21,5
1-in. Class 600	33,4	50,8	70		16,35	19	22,5	16	19
1 1/2-in. Class 600	48,3	73	90,5		16,35	21,5	26,5	18	21,5
2-in. Class 600	60,3	92,1	108		17,92	21,5	26,5	18	21,5
1-in. Class 900/1500	33,4	50,8	71,5		16,35	19	22,5	16	19
1 1/2-in. Class 900/1500	48,3	73	92		16,35	21,5	26,5	18	21,5
2-in. Class 900/1500	60,3	92,1	124		17,92	21,5	26,5	18	21,5
1-in. Class 2500	33,4	50,8	82,5		16,35	19	22,5	16	19
1 1/2-in. Class 2500	48,3	73	114		17,92	21,5	26,5	18	21,5
2-in. Class 2500	60,3	92,1	133		17,72	21,5	26,5	18	21,5

ORDERING CODES
1. SHANK FORM

S	Straight	E	Stepped
T	Tapered		

2. MATERIAL

MB	Carbon Steel / ASTM A105		
MC	AISI 304SS	ME	AISI 310 SS
MF	AISI 316 SS	MG	AISI 316L SS
MM	Monel 400	MN	Monel K-500
MO	Hastelloy C-276	MQ	Inconel 600
MR	Inconel 625	MS	Inconel 800
MT	Inconel 825	MI	AISI 321 SS
M6	AISI 446 SS		

3. INSTRUMENT CONNECTION

02N	1/4" NPT (F)	04N	1/2" NPT (F)
05N	3/4" NPT (F)	04B	1/2" BSP (F)
02B	1/4" BSP (F)	05B	3/4" BSP (F)
04M	M20 x 1.5 mm (F)		

4. PROCESS CONNECTION

XXX FLANGE ASME B16.5

6. HEAD TYPE

R Round

7. HEAD SIZE

XX Socket size mm

8. LAG EXTENSION

XXX 40 to 225 mm

9. ROOT DIAMETER

XX.X Mention in 'mm'

10. TIP DIAMETER

XX.X Mention in 'mm'

11. BORE DIAMETER ("d")

C	9.0 mm	A	6.6 mm
O	10 mm	D	9.6 mm
B	7 mm	F	11 mm
G	13 mm		

12. IMMERSION LENGTH ("U")

XXXX 50 mm up to 1000 mm

15. TIP THICKNESS ("t")

M	5 mm
N	6.35 mm (1/4")
O	10 mm

16. OTHER OPTIONS

XI	Plug & chain in SS
XK	Electro polishing
TC	Material test certificate 3.1
TF	PMI test
TG	IGC test
TH	Hydro test certificate
TN	Tested to NACE standards
TW	Wake Frequency Calculation per ASME PTC 19.3 last edition
TU	Ultrasonic test

Ordering example : W201-T-MM-04N-XXX-R-48,3-70-A-255-N-TW